

## HOW TO CREATE A PRINT-READY FILE - POS DISPLAYS

The following instructions will help you create a print-ready file. If after reading them you are still unsure about anything, please visit the FAQ section of our website, request a professional File Check or contact customer services.

### 1 FILE FORMAT

Send your file in PDF format in 1:1 scale (not password protected).

### 2 COLOUR

All files should be sent in **CMYK** (cyan, magenta, yellow, black), with the **Fogra 39 colour profile**. Images in RGB or with PANTONE colours will be converted automatically using a standard colour separation profile.

### 3 RESOLUTION

The optimal resolution for the print files is **between 100 and 150 dpi**.

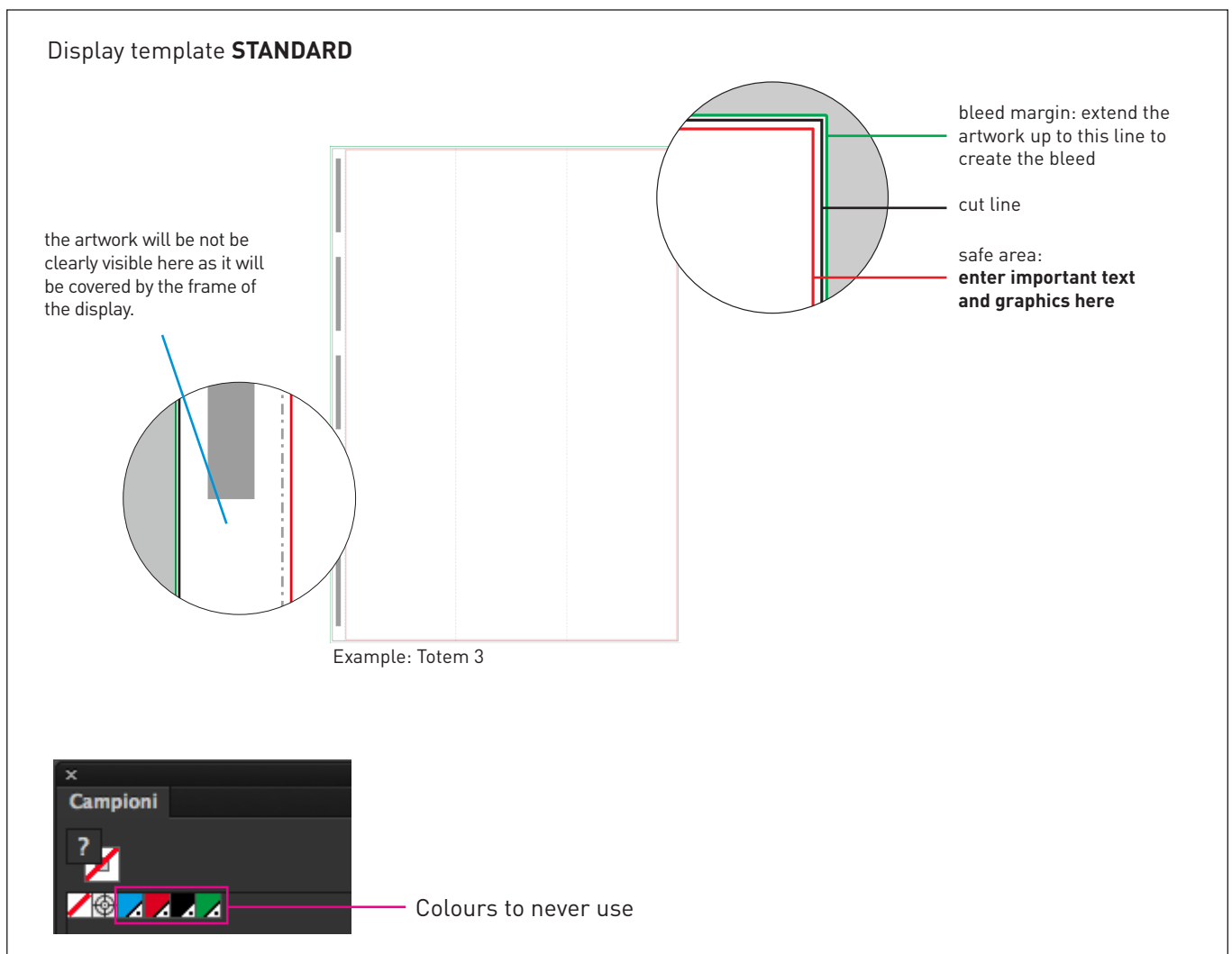
### 4 TEMPLATE

**Always download the template** for the product you purchased from the website and use it as the basis for positioning your artwork: this will make it easier to create a print-ready file.

**Insert your artwork on the 'Artwork' layer, delete all the guidelines except the green line** (the bleed margin) and save the file as a high quality PDF.

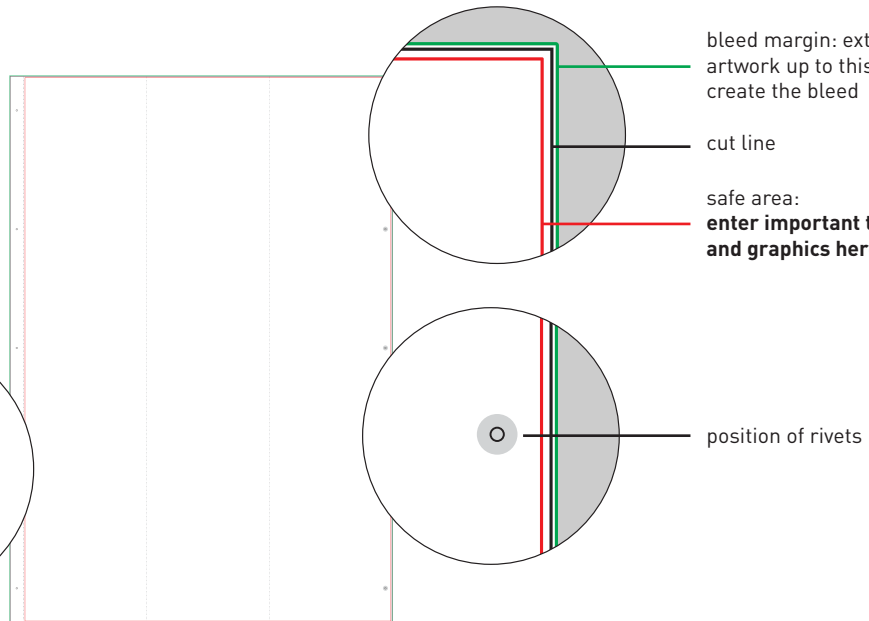
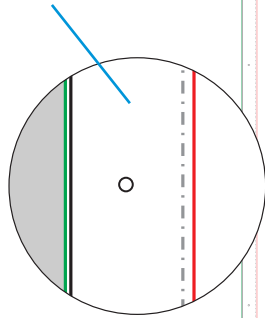
**WARNING:** Do not alter the scale of the design, and **do not resize the template**. **Do not use** the spot colours **Artios\_Cut, Artios\_Taglio and Artios\_Crease** in the file, as they will not be printed.

**WARNING:** Do not place important artwork outside **the safe area, as it will not be clearly visible on the finished product**.



## Display template **PREMIUM**

the artwork will be not be clearly visible here as it will be covered by the frame of the display.



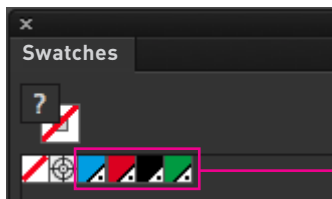
bleed margin: extend the artwork up to this line to create the bleed

cut line

safe area: **enter important text and graphics here**

position of rivets

Example: Totem 3

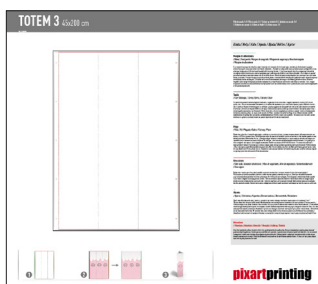


Colours to never use

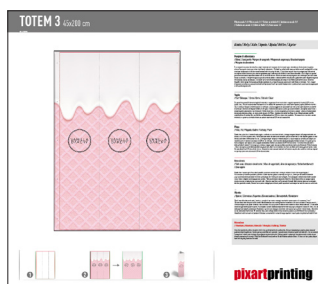
### 5 ADDITIONAL INFORMATION

The minimum line width is 0.5 pt. The minimum printable font size is 12 pt. **We do not advise placing frames and passepartouts too close to the edges**, to avoid any inaccuracy due to the cutting tolerances.

## GOOD TO KNOW



  
DOWNLOAD  
THE TEMPLATE



  
INSERT YOUR  
ARTWORK



  
DELETE ALL LINES  
except the green line



  
SAVE  
THE PDF



  
PRINTED  
RESULT

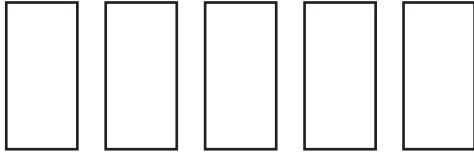
 PDF

 100-150 ppi

 CMYK

 FOGRA 39

## ASSEMBLY - POS displays Standard



5 double-sided adhesive strips

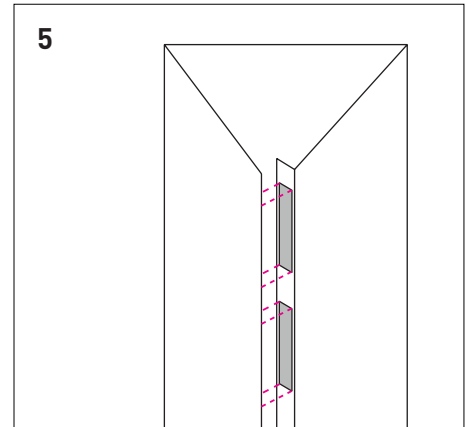
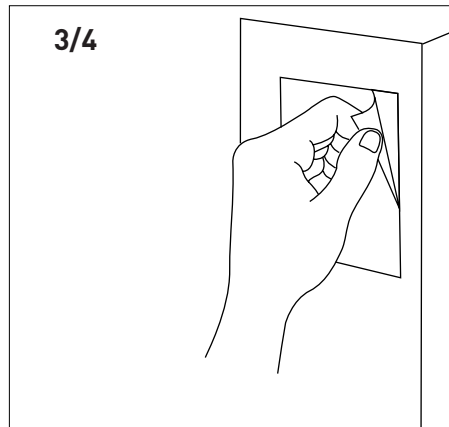
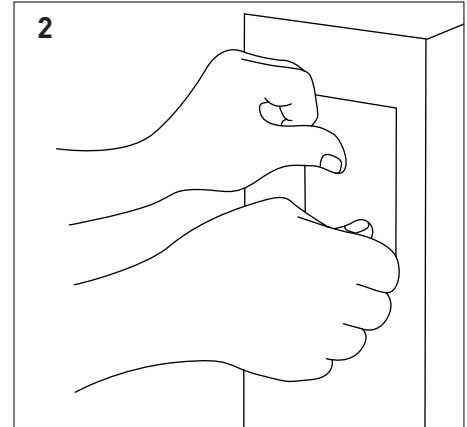
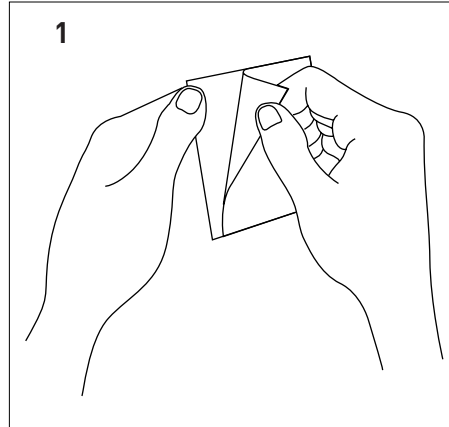


1-2. Remove the film from one of the two sides and attach the adhesive strip to the cardboard.

3. Remove the film.

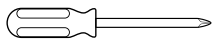
4. Repeat operations 1-3 for all the adhesive strips.

5. Close the display to stick the two sides together.

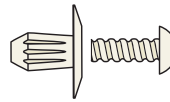


To make assembly as easy as possible, we recommend pressing the two surfaces together for a few seconds so they stick well to the adhesive strip.

# ASSEMBLY - POS displays Premium



crosshead screwdriver  
(not supplied)



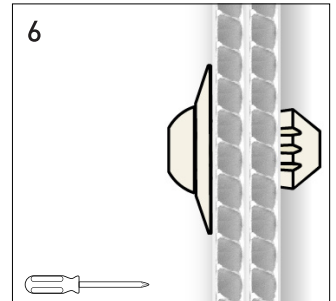
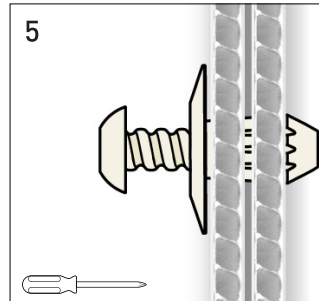
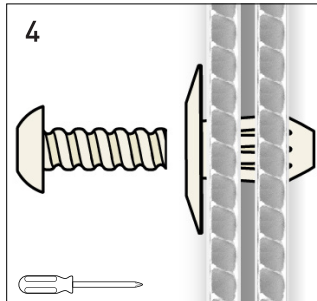
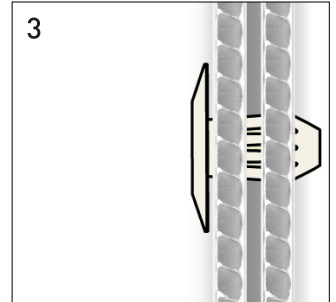
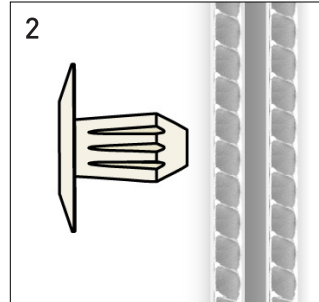
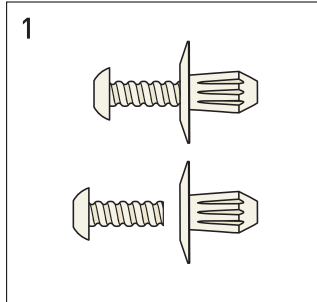
5 nylon rivets  
Ø 8 x 13.5 mm (supplied)



1. Remove the head from the shaft of the rivet.

2-3. Insert one rivet at a time in the appropriate holes, so as to bring the two sides of the display together.

4-5-6. Screw the head to the shaft using a screwdriver, until the two sides of the display are joined.



To make assembly as simple as possible, we recommend the following:

- start from the central hole when fixing the rivets, and move towards the outside, in the sequence shown in the diagram.

- Remove the swarf from the holes before inserting the rivets.

- Hold the display horizontally, not vertically, when fixing the rivets.

