

HOW TO CREATE A PRINT-READY FILE - GLUE-BOUND NOTEPADS

The following instructions will help you create a print-ready file. If after reading them you are still unsure about anything, please visit the [FAQ](#) section of our website, request a professional File Check or contact customer services.

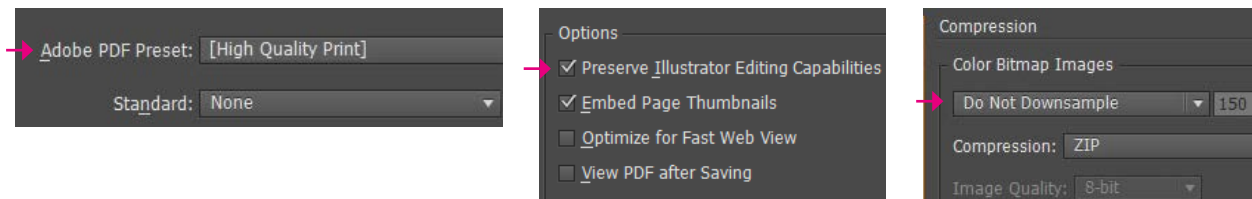
1 FILE FORMAT

Send your file in PDF format in 1:1 scale (not password protected).

2 TEMPLATE

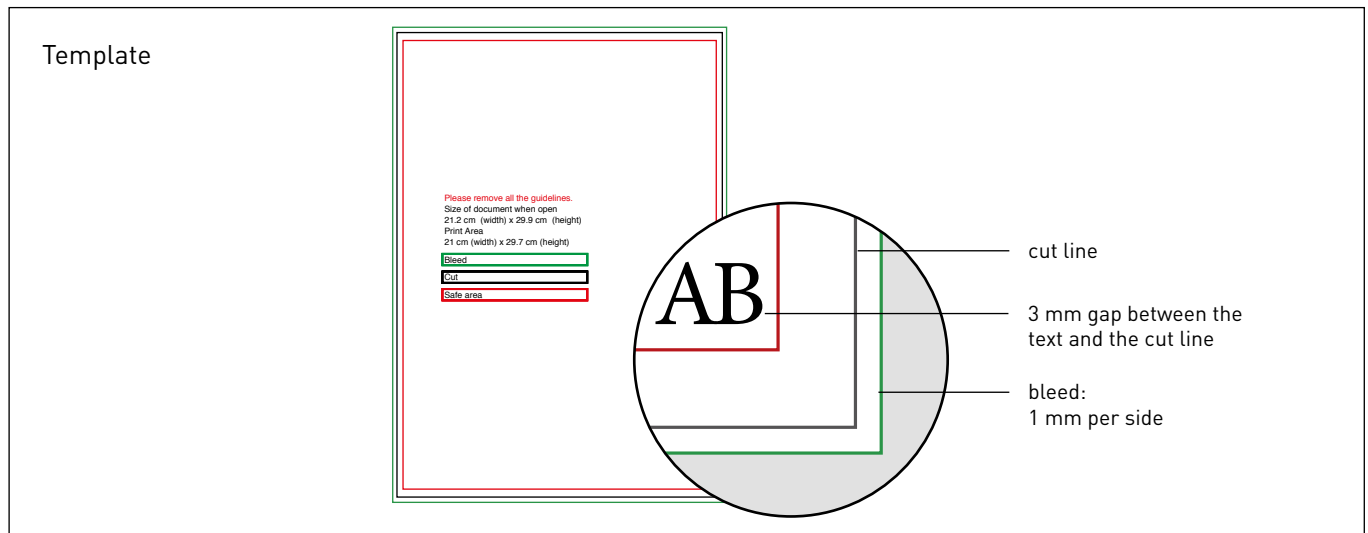
Always download **the template** for the product you purchased from the website and use it as the basis for positioning your artwork: this will make it easier to create a print-ready file. Once you have added your artwork, **delete all the guidelines** and export it as a single-page PDF.

Save the PDF in high quality, without downsampling and keeping the layers separate.



3 MARGINS AND BLEED

Download the template for the product you have purchased; **the required bleed of 1 mm** will already be in place. We recommend placing text at least **3 mm** from the cut line.



4 RESOLUTION

The optimal resolution for the print files is **300 dpi**.

5 COLOURS

All files should be sent in **CMYK** (cyan, magenta, yellow, black), with the **Fogra 39 colour profile**. Images in RGB or with PANTONE colours will be converted automatically using a standard colour separation profile.

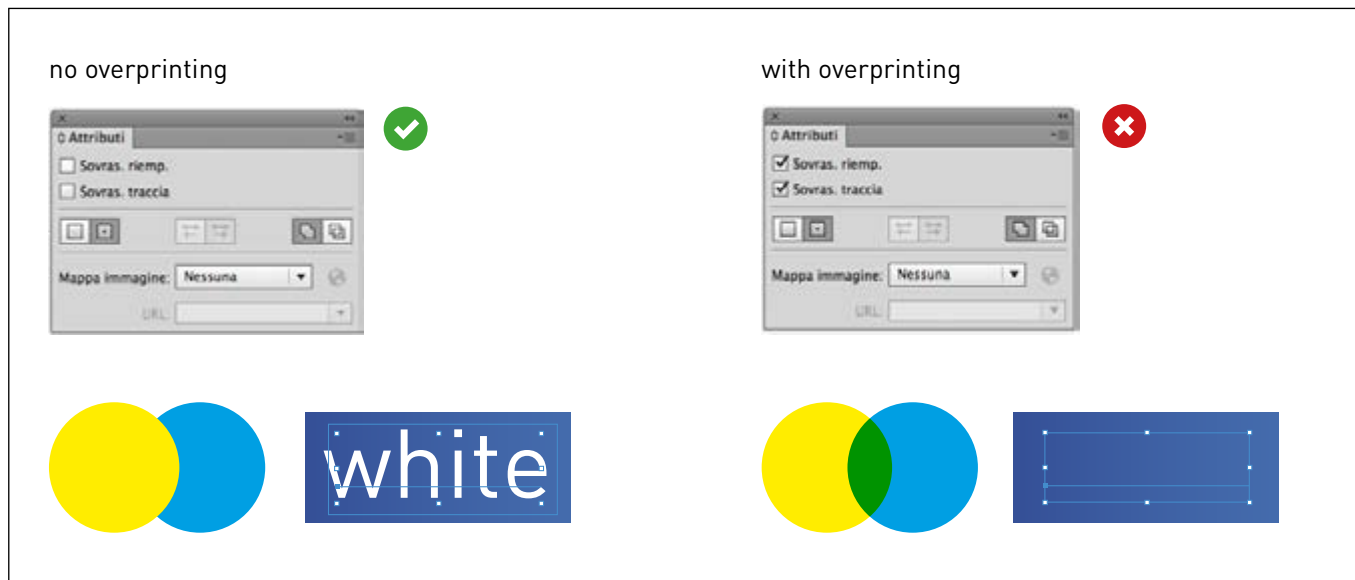
6 FONTS

Fonts should be **embedded in the PDF or converted into curves/paths**. The minimum font size (below which we cannot guarantee perfect print quality) is 6 pt.

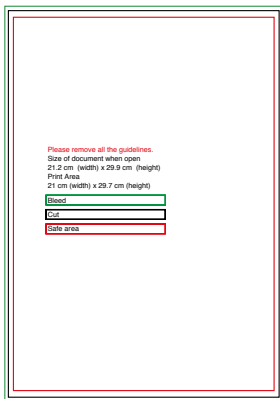
7 ADDITIONAL INFORMATION

The vector paths should have a weight of at least **0.25 pt.** We **do not advise placing frames and passepartouts too close to the edges**, to avoid any inaccuracy due to the cutting tolerances.

By default, when overlapping opaque colours are printed, the top colour knocks out the area underneath. Overprinting prevents knockouts and allows the inks to overlap. To avoid unexpected colour results, **check that your file does not contain overprinted objects or text.**



GOOD TO KNOW - Small format



DOWNLOAD THE
TEMPLATE



INSERT YOUR
ARTWORK



DELETE ALL
GUIDELINES



SAVE
THE PDF



PDF



300 dpi



CMYK



FOGRA 39



1mm of bleed



crop marks