

## INSTRUCTIONS FOR CREATING A PRINT-READY FILE

### GAZEBO

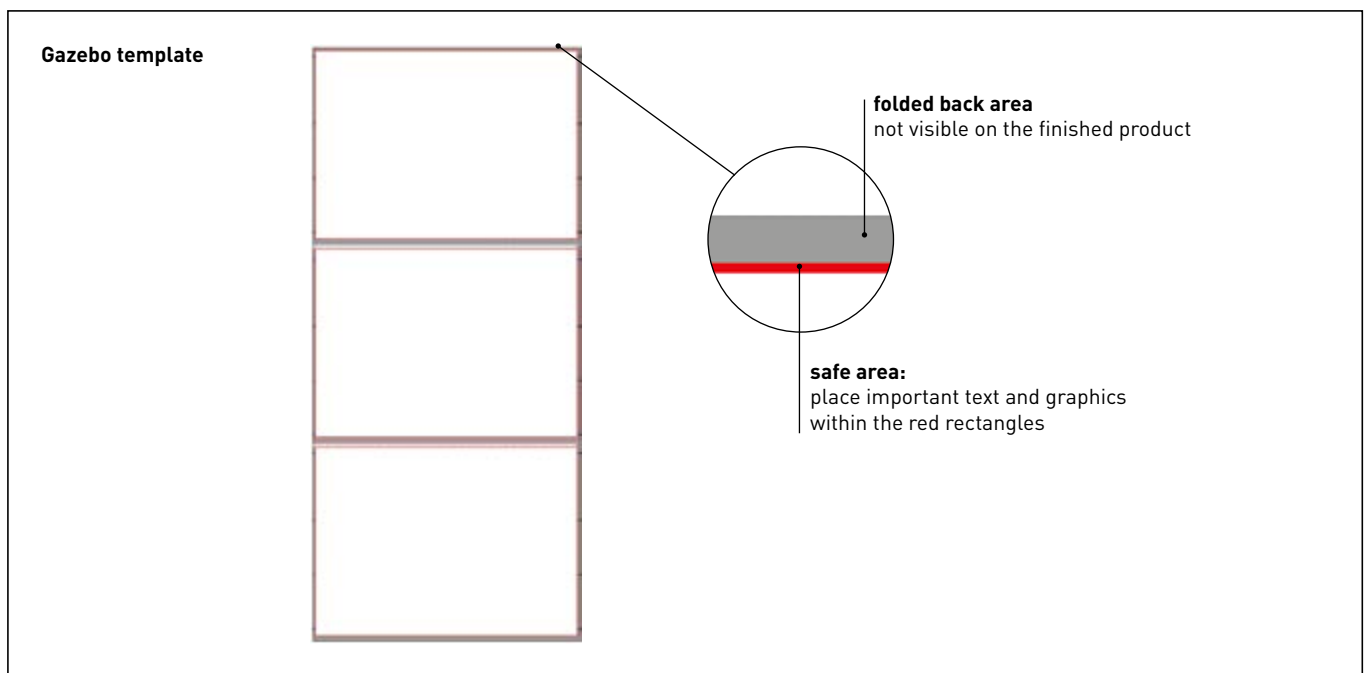
The following instructions are designed to help you create a print-ready file. If after reading them you are still unsure about anything, please visit the FAQ section of our website, request a professional File Check or contact customer support.

#### 1 FILE FORMAT

Our systems can only process files in PDF format (not password-protected).

#### 2 TEMPLATE

To produce a print-ready file, download the template from the order page, add your artwork and save it as a PDF file. We recommend that you extend the background artwork to include the folded back areas (marked with a solid grey background on the template), but keep any text and images within the safe area.



### GOOD TO KNOW



DOWNLOAD  
THE TEMPLATE



INSERT YOUR  
ARTWORK



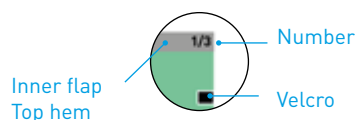
DELETE ALL  
THE GUIDELINES



SAVE AS A PDF



PRINTED RE-  
SULT



### 3 COLOURS

The same colour can appear slightly different on different media. This is due to the material's physical composition, e.g. natural fabrics absorb much more ink than synthetic fabrics.

All files should be sent in CMYK (cyan, magenta, yellow and black), with a Fogra 39 colour profile.

Any images which are sent in RGB or in PANTONE colours will be automatically converted using a standard separation profile.

### 4 RESOLUTION

The optimal resolution for the print files is between 1000 and 1500 dpi.

### 5 ADDITIONAL INFORMATION

The minimum printable line weight is 0.5 pt. The fabric display banners can only be printed on one side.


The ink coverage on synthetic fabrics varies depending on the weight and weave of your chosen material. The Windproof Outdoor Fabric has an inferior coverage to the Standard Banner fabric.

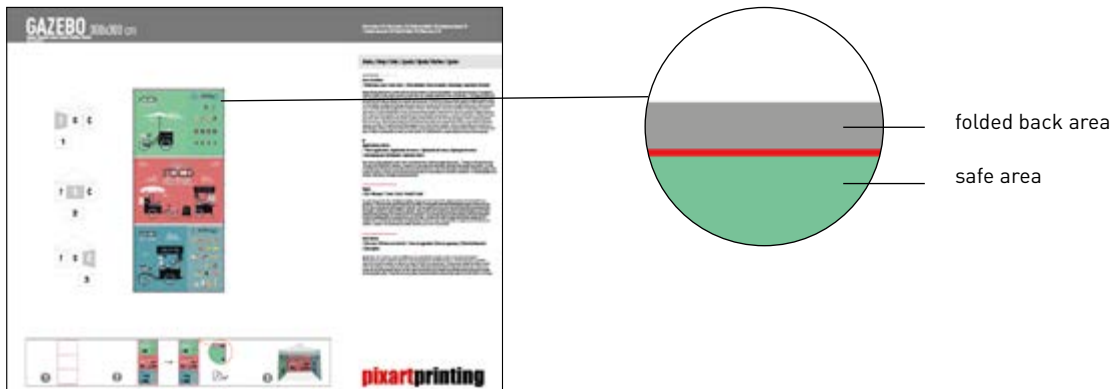
Order the Roll to Roll sample pack if you want to compare the characteristics of the different materials.

## GOOD TO KNOW - Gazebo

 **Warning:** the template is in 1:10 scale.

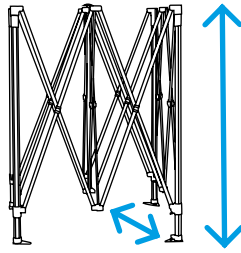
File in scala 1:10 / File in 1:10 scale / Fichier en échelle 1:10 / Archivo en escala 1:10 / Ficheiro em escala 1:10 / Datei in Maß 1:10 / Fisier scara 1:10

 Extend your artwork to cover the bleed; to avoid important text or artwork being printed on the seams or folded back areas, we recommend placing them within the safe area.



# ASSEMBLY INSTRUCTIONS - GAZEBO

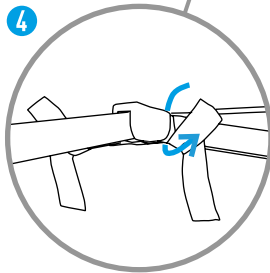
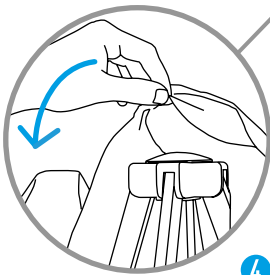
1 OPEN THE FRAME CAREFULLY



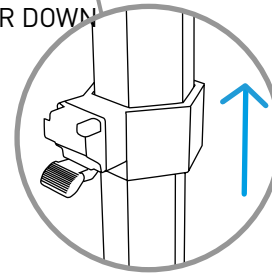
2 PLACE THE FABRIC ON TOP OF THE STRUCTURE

3 ATTACH THE VELCRO ON THE ROOF TO THE SUPPORTS

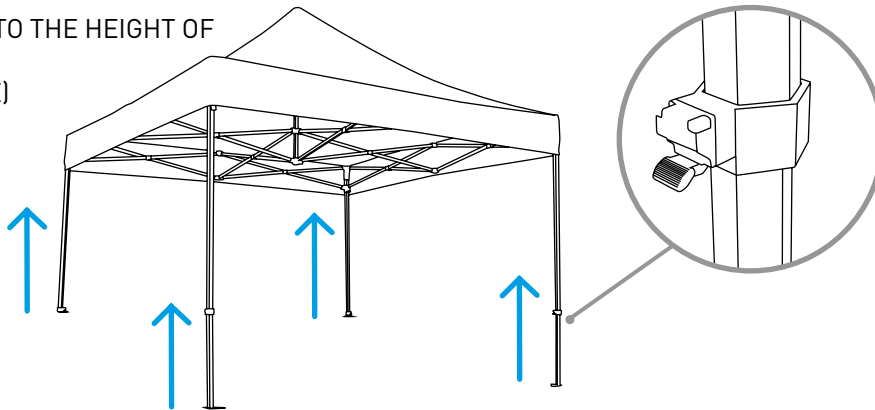
6 TURN THE HANDLE TO TIGHTEN THE ROOF



5 PULL THE LEVER DOWN TO RAISE THE FRAME



7 RAISE THE FRAME TO THE HEIGHT OF THE HIGHEST SLOT (THE FOURTH HOLE)



8 ATTACH THE VELCRO ON THE WALL TO THE ROOF

9 STRETCH OUT THE FABRIC AND ATTACH IT TO THE LEGS

