

HOW TO CREATE A PRINT-READY FILE - FABRIC EAS PEDESTAL COVERS

The following instructions are designed to help you create a print-ready file. If after reading them you are still unsure about anything, please download the template, visit the FAQ section of our web site, request a professional File Check or contact customer support.

1 FILE FORMAT

Send your file in PDF **format (not password protected)**.

2 TILING

Tiling is not available for this product type.

3 COLOURS

All files should be sent in **CMYK** (cyan, magenta, yellow, black) format with the **Fogra 39 colour profile**.

Images in RGB or with PANTONE colours will be converted automatically using a standard colour separation profile.

The same colour may vary slightly in appearance depending on the media onto which it is printed. This is due to the material's physical composition: for example, natural fabrics absorb much more ink than synthetic fabrics, and so the colour will appear more faded. We therefore recommend **not printing colours that are too dark onto natural fabrics**; for optimal results with these colours, we advise using synthetic fabrics instead.

For a better idea of the characteristics of natural and synthetic fabrics, order our **Roll to Roll Sample Pack**.

4 RESOLUTION

The optimal resolution for the print files is **between 100 and 150 ppi**.

5 ADDITIONAL INFORMATION

The minimum printable line weight is 0.5 pt.

6 WASHING, DRYING AND IRONING INSTRUCTIONS

A. Washing / Drying

For best results, we recommend dry cleaning and using a low setting if tumble drying. Washing can cause a slight fading of the colour in natural textiles, especially for darker shades.

B. Ironing

Our natural and synthetic fabrics can be ironed using the standard "synthetics" iron setting. Always iron on the unprinted side. Steam can be used to iron out creases.



dry
clean



dry at a low
temperature



iron with a
cool iron

7 TEMPLATE

Download the template for your chosen product from the website and use it as the basis for your work: **you will find the dimensions you gave when ordering, the bleed, the reinforced stitching** and other guidelines already correctly set up. Insert your artwork, **delete all guidelines except the bleed margin (green line)** and save the file as a high-quality PDF without crop marks.

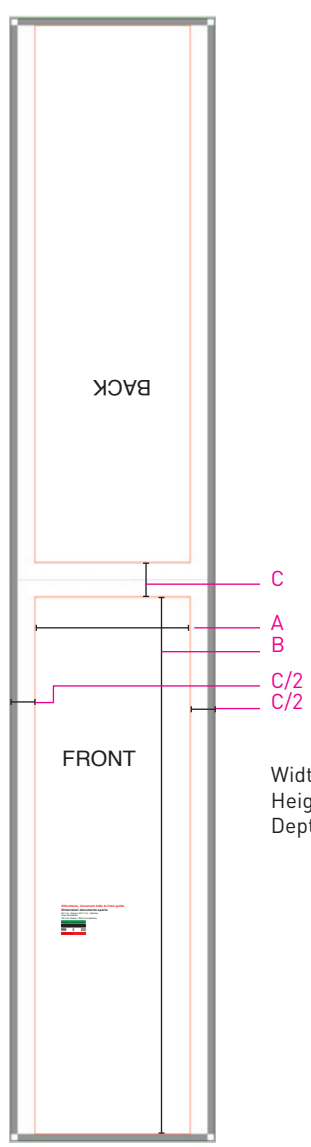
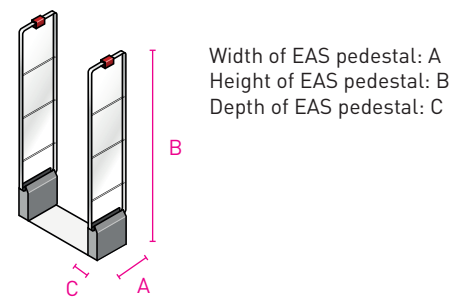
The opening of the EAS pedestal cover will be on the bottom, and the template generated will show the fabric flat, ready to be folded in half. The template will have an additional 2 cm around the edges compared to the final size for the reinforced stitching.

EAS pedestal cover template

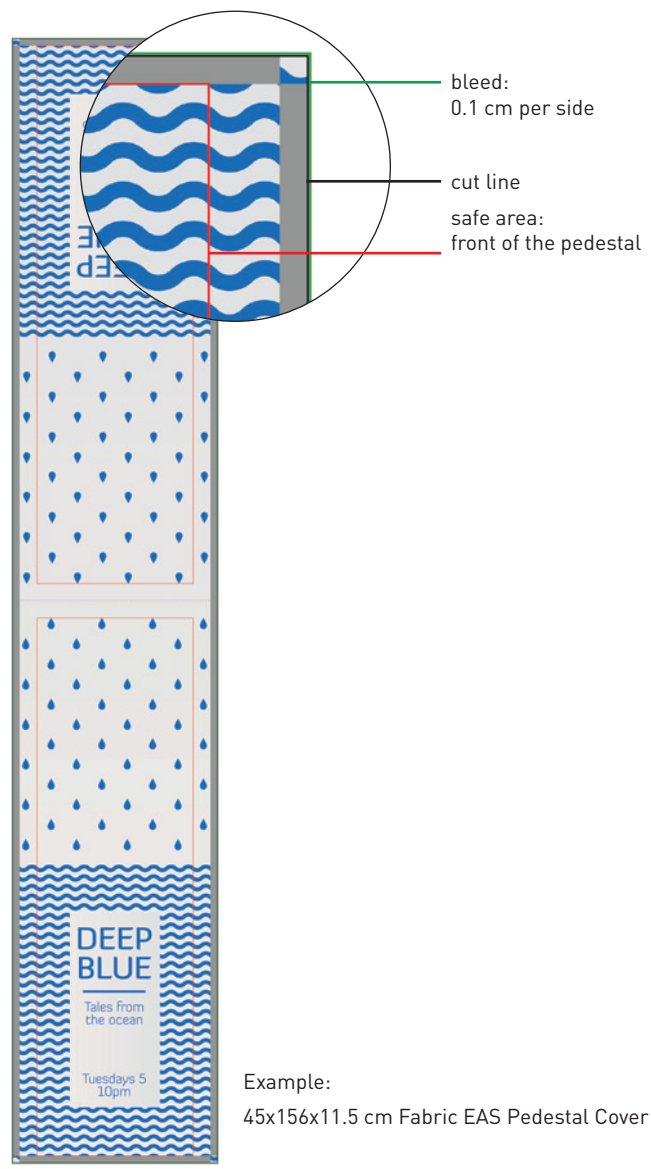
Fill in the order form with the dimensions of your pedestal, bearing in mind the instructions regarding the depth.

Width of EAS pedestal (cm)	<input type="text" value="45.00"/>
Height of EAS pedestal (cm)	<input type="text" value="156.00"/>
Depth of EAS pedestal (cm) ⓘ	<input type="text" value="11.50"/>

We recommend adding 2-3 cm to the depth to making applying the fabric easier.

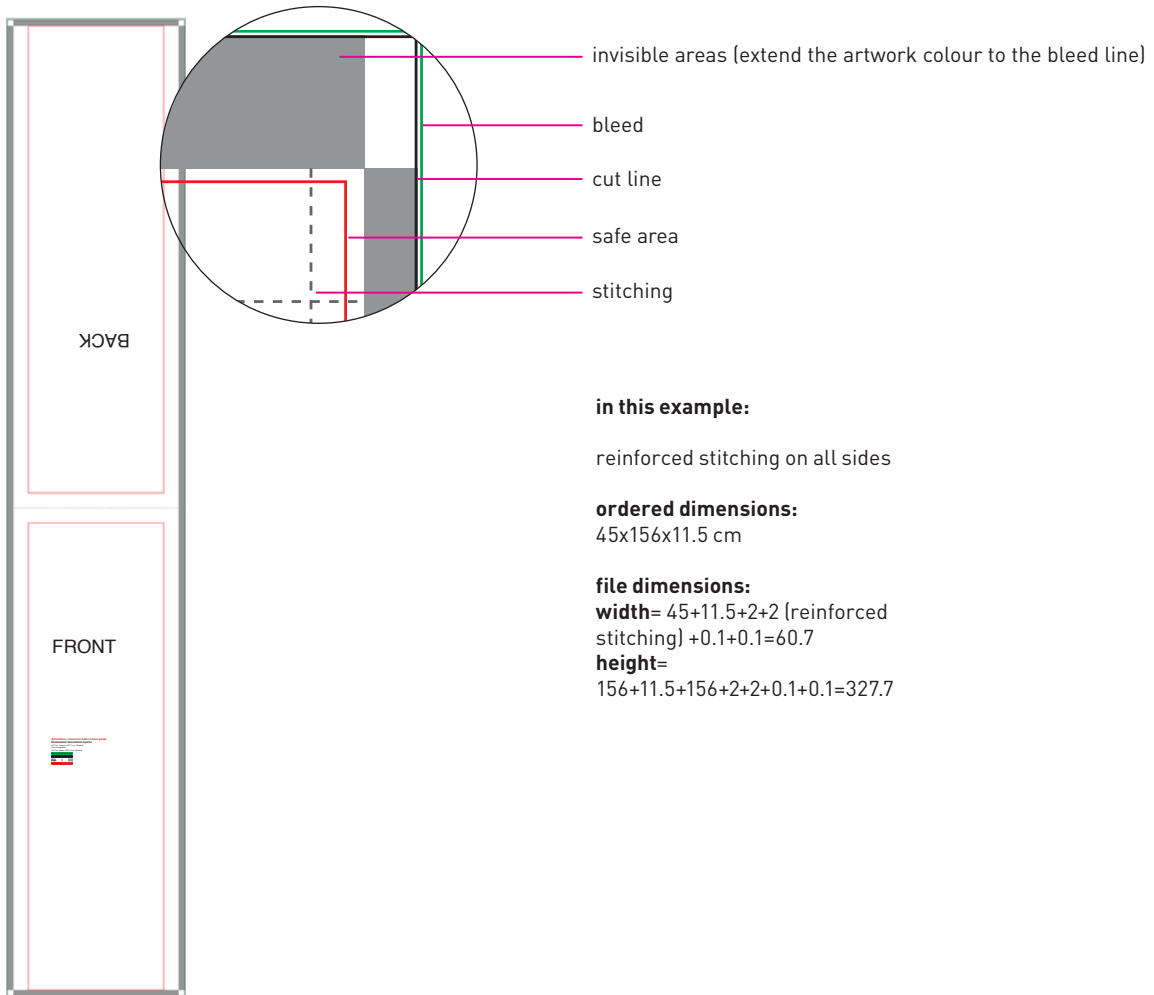


Width of EAS pedestal: A
Height of EAS pedestal: B
Depth of EAS pedestal: C

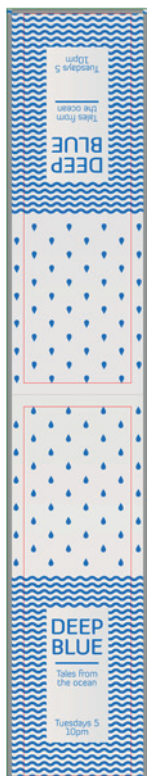


Example:
45x156x11.5 cm Fabric EAS Pedestal Cover

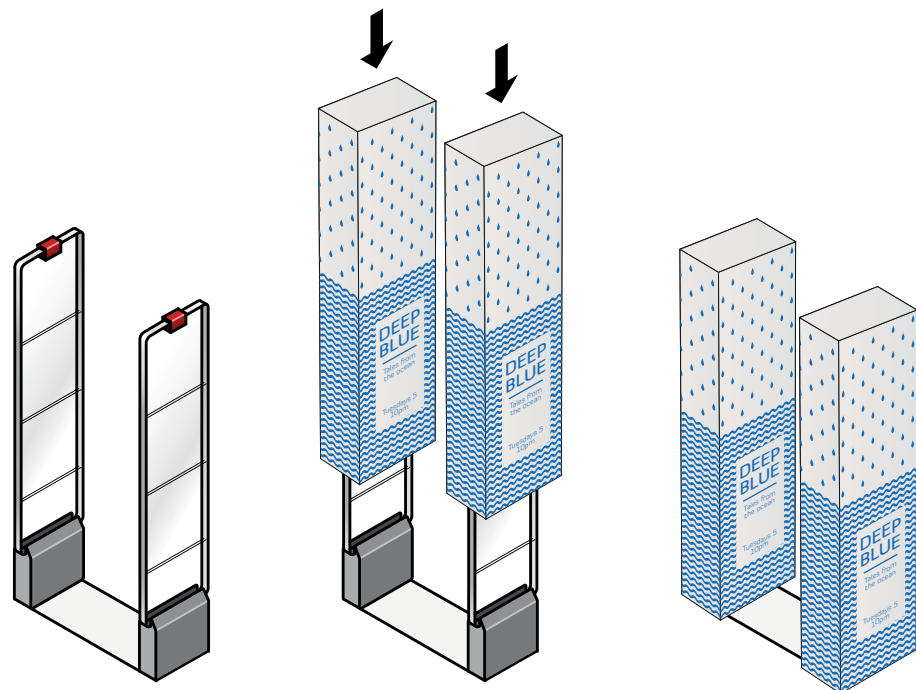
Reinforced stitching



Artwork added



Finished product



GOOD TO KNOW - Fabric EAS Pedestal Cover



DOWNLOAD
THE TEMPLATE



INSERT YOUR
ARTWORK



DELETE ALL GUIDELI-
NES except the green line



SAVE
THE PDF



PDF



100-150 ppi



CMYK



FOGRA 39



0.1 cm bleed



registration marks



FURTHER INFORMATION

If your pedestal has a curved top, we recommend folding your fabric inwards so it follows the curve of the supporting structure.

