

## HOW TO CREATE A PRINT-READY FILE - MAGNETIC SHEETING

The following instructions are designed to help you create a print-ready file. If after reading them you are still unsure about anything, please download the template, visit the FAQ section of our website, request a professional File Check or contact customer support.

### 1 FILE FORMAT

Send your file in PDF format (not password protected).

### 2 FILE ORIENTATION

The orientation of the file must match the choice made when filling in the order form (landscape or portrait).

### COLOURS

- 3 All files should be sent in **CMYK** (cyan, magenta, yellow, black), with the **Fogra 39 colour profile**. Images in RGB or with PANTONE colours will be converted automatically using a standard colour separation profile.

### 4 RESOLUTION

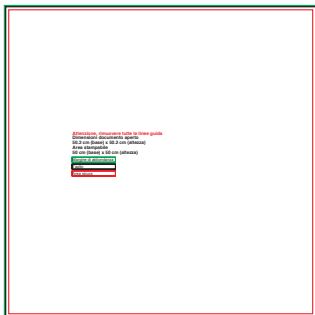
The optimal resolution for the print files is **between 100 and 150 ppi**.

### 5 TEMPLATE

**Download the template** for your chosen product from the website and use it as the basis for your work: **you will find the dimensions you gave when ordering, the bleed and other guidelines** already correctly set up.

Insert your artwork, **delete all guidelines except the green line** and save the file as a high-quality PDF without crop marks.

## GOOD TO KNOW



DOWNLOAD THE TEMPLATE



INSERT YOUR ARTWORK



DELETE ALL LINES  
except the green line



SAVE THE PDF



PDF



100-150 ppi



CMYK



FOGRA 39



1 mm bleed

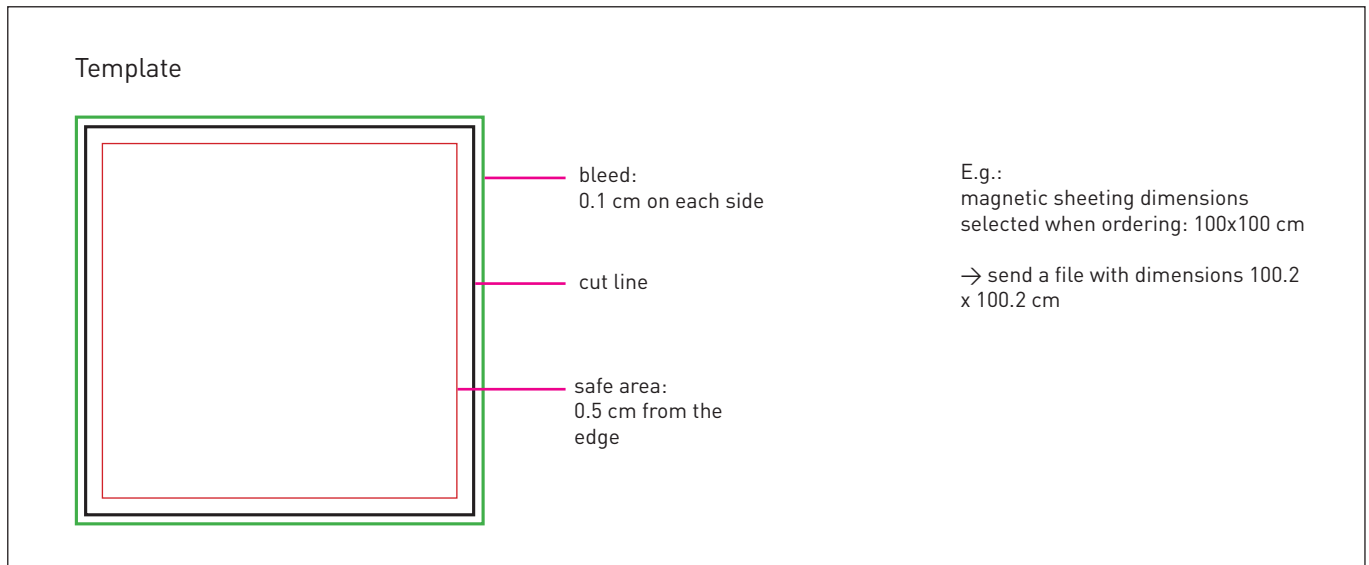


registration marks

## 6 BLEED AND SAFE AREA

Download the template for the product you have purchased; **the required bleed of 0.1 cm on each side** will already be in place.

Text should be placed at least 0.5 cm from the cut line.



## 7 ADDITIONAL INFORMATION

The minimum printable line weight is 0.5 pt. The minimum printable font size is 12 pt .

We **do not recommend positioning frames too close to the margins**, to avoid inaccuracy due to the cutting tolerances.

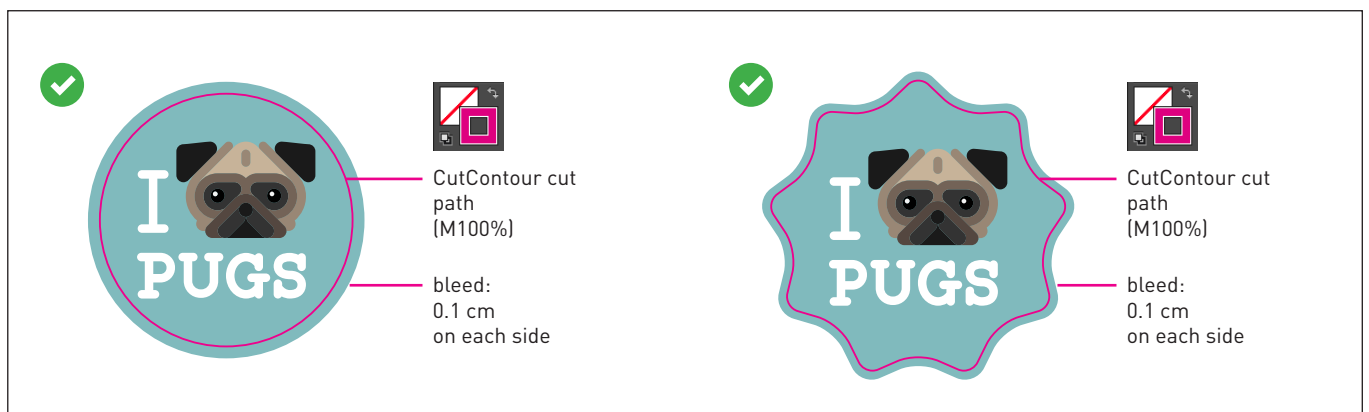
The minimum printable size is 10 x 10 cm, and the maximum printable size is 99 x 300 cm,

## 8 CUT TO SHAPE

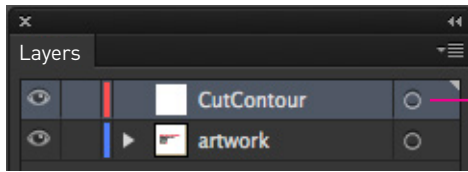
For a shaped cut, the file must be saved as a PDF **containing the artwork and the cut path**. The artwork must always have a bleed of 0.1 cm beyond the CutContour cut line. We recommend not creating overly complex shapes, as this could lead to an imprecise, non-uniform cut.

Follow these steps to create the cut path correctly:

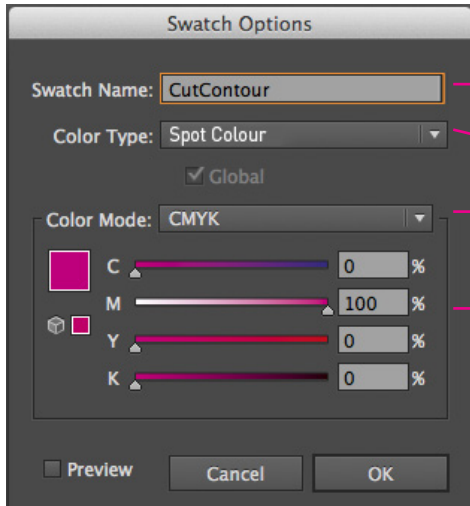
- Create a new layer from the **Layers** palette, and name it **"CutContour"**.
- Create a new colour swatch from the **Swatches** palette and name it **"CutContour"**; select **Spot Colour** as the **Colour Type** and assign the following CMYK percentages: 0, 100, 0, 0 (magenta only).
- Create a vector path on the **CutContour** layer which corresponds to the cut line for your panel, and assign it a stroke colour that corresponds to the newly-created **CutContour** swatch.
- Save as a high quality PDF, keeping the layers separate.



## Cut to shape



CutContour **layer**



CutContour **swatch**

name it "**CutContour**" (not cutcontour or CUTCONTOUR)

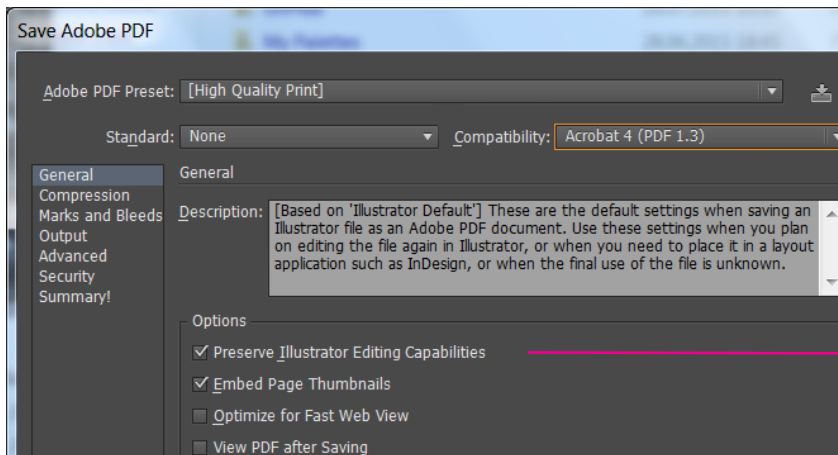
colour type: Spot Colour

colour mode: CMYK

C: 0%  
M: 100%  
Y: 0%  
K: 0%



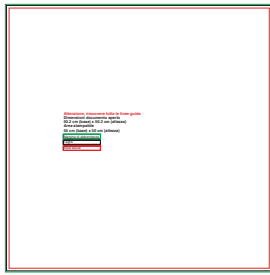
CutContour **stroke colour**



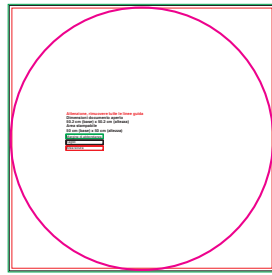
**Save the PDF**  
keeping the layers  
separate

# GOOD TO KNOW - Magnetic Sheeting

Always follow these steps:



DOWNLOAD THE  
TEMPLATE



CREATE THE  
CutContour



INSERT  
YOUR ARTWORK

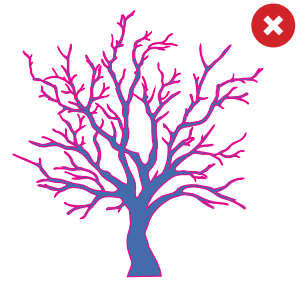
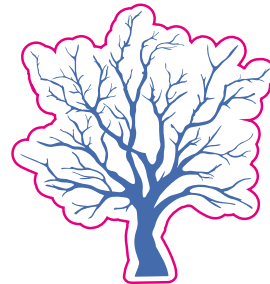


DELETE ALL  
GUIDELINES  
except the CutContour line



SAVE THE  
PDF

Avoid overly complex shapes



The CutContour vector cut path must be a single, unbroken line. Multiple, separate lines within the same file will not be cut.

