

## HOW TO CREATE A PRINT-READY FILE:

### HEADER CARDS

The following instructions are designed to help you create a print-ready file. If after reading them you are still unsure about anything, please download the template, request a professional File Check or contact customer support.

#### 1 FILE FORMAT

Our systems can only process files in PDF format and in 1:1 scale (not password-protected).

#### 2 COLOURS

All files must be sent in CMYK (cyan, magenta, yellow and black), with a Fogra 39 colour profile. Any images which are sent in RGB or in PANTONE colours will be automatically converted using a standard separation profile.

#### 3 RESOLUTION

The optimal resolution for the print files is **300 dpi**.

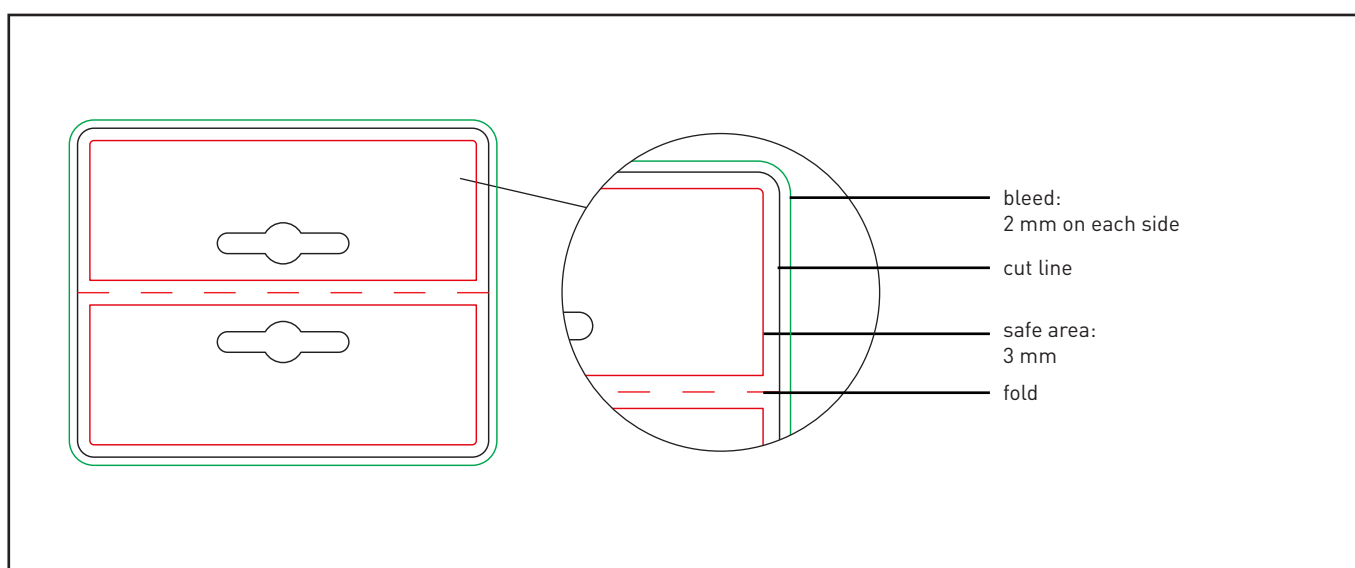
#### 4 TEMPLATE

To create a print-ready file for these products you must download the template from the website.

Enter your artwork on the Artwork layer, covering the entire area of the template, up to the green margin.

Delete the guidelines and save the file in PDF format. This will ensure your file is print-ready. Remember not to alter the scale of the design, and do not resize the template.

Do not use spot colours when creating your graphics, as they will not be printed.



#### 5 FINISHES

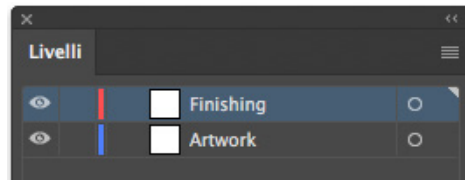
If you have chosen the **3D Varnish**, **Gold Coating** or **Silver Coating** options, remember that the artwork for the finish must be entered on the dedicated **Finishing** layer.

The artwork on the Finishing layer must not contain gradients, halftone screens or transparency, must consist of vector graphics and must use the **Finishing colour swatch**.

The coatings can be created in any shape you like, giving you more creative freedom. The minimum printable font size is 10 pt, and the minimum line weight is 1 pt. Remember it is best not to add finishes near the creases, to avoid the coating or lamination cracking. The dedicated colour can already be found in the template, with the name **Finishing**. Alternatively, follow these steps to recreate the colour swatch.

① **LAYERS > CREATE NEW > Finishing**

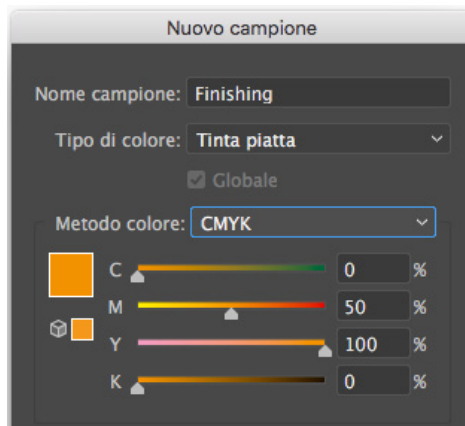
Create a new layer from the **Layers** panel above the Artwork layer, and name it **Finishing**.



② **SWATCHES > CREATE NEW > Finishing**

Create a new colour swatch from the **Swatches** panel and name it **Finishing**; select **Spot Colour** as the Colour Type and assign the CMYK percentages 0, 50, 100, 0.

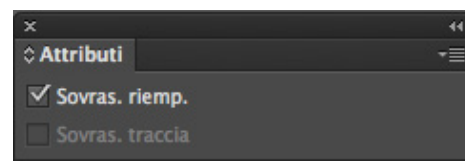
Finishing  
Spot Colour  
CMYK  
C: 0%  
M: 50%  
Y: 100%  
K: 0%



③ **FILL > Finishing**

Create a vector fill on the Finishing layer which corresponds to the area of the artwork to which you want to add the finish, and assign it the Finishing spot colour.

Overprint must be selected for all paths on the Finishing layer.



④ Save the PDF, keeping the layers separate.



**For Gold Coating or Silver Coating, we recommend placing the artwork relating to the finish in the Finishing layer only, remembering to delete it from the Artwork layer.**

⑥ **FONTS**

Fonts should be **embedded in the PDF or converted into curves/paths**. The minimum font size (below which we cannot guarantee perfect print quality) is 6 pt.

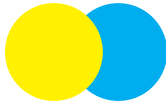
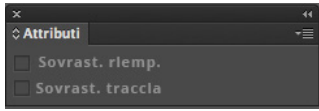
⑦ **ADDITIONAL INFORMATION**

Vector paths should have a weight of at least **0.25 pt**. We **do not advise placing frames and passepartouts too close to the edges**, to avoid any inaccuracy due to the cutting tolerances.

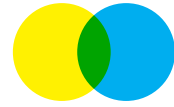
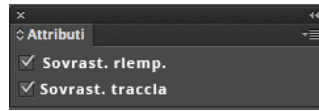
By default, when two overlapping opaque colours are printed, the top colour knocks out the area underneath. Overprinting prevents knockouts and allows the inks to overlap.

To avoid unexpected colour results, **check that your file does not contain overprinted objects or text**.

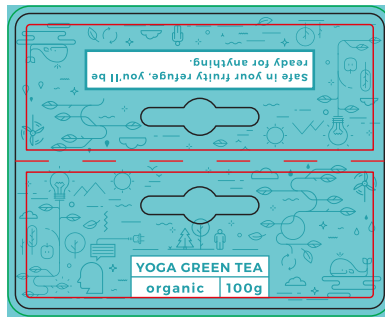
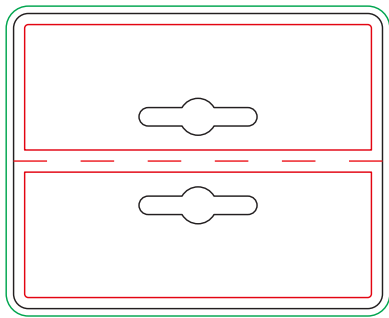
**NO OVERPRINTING**



**WITH OVERPRINTING**



**GOOD TO KNOW - Specifications**



DOWNLOAD  
THE TEMPLATE



INSERT YOUR ARTWORK  
on the Artwork layer



DELETE ALL GUIDELINES  
except the green line



SAVE THE PDF

PRINTED RESULT

✓ PDF

✓ 100-150 dpi

✓ CMYK

✓ FOGRA 39